

## Plug In SpeedLight with flexible top plate, ribbed, removable teflon plate

ITEM # \_\_\_\_\_

MODEL # \_\_\_\_\_

NAME # \_\_\_\_\_

SIS # \_\_\_\_\_

AIA # \_\_\_\_\_

**603945**  
**(HSG3RPRSE3)**SpeedLight with flexible top plate,  
removable ribbed teflon plate

### Main Features

- It combines 3 cooking technologies: contact, infrared radiation and microwaves to provide perfectly cooked food, heated to the core.
- Self adjusting ribbed upper plate to heat food adapting to its thickness.
- The Energy Saving Mode automatically switches to stand-by after an amount of time settled by the operator (from 1 to 60 minutes).
- Delivered with USB port and wi-fi connection to optimize workflows allowing local and remote interaction (temperatures, countdowns, warnings).
- Electronic control with digital 4.3" LED display with adjustable brightness.
- 8 programs selectable on the display.  
The 8 programs can be adjusted by the user. The programmable parameters are:
  - upper plate temperature
  - bottom plate temperature
  - total duration of each cycle
  - duration and distribution of microwaves within each cycle.
- Countdown display and buzzer with adjustable volume at the end of the cycle.
- Automatic mechanical lid holding and opening system controlled.
- Ergonomic handle for easy movement of the lid.
- Non-stick pressed tray to be used during all cooking cycles for maximum cleanability, meeting food contact requirements.
- Compliant with Regulation (EC) No 1935/2004 and its amendments, Regulation (EC) No 2023/2006 and its amendments.

### Construction

- Aluminum ribbed top contact plate (215 x 215 mm) treated with a special non-stick coating.
- 2 temperature probes for an independent control of the top and bottom plate temperature.
- Smooth 4 mm thick quartz glass bottom cooking surface (250 x 250 mm).
- Independent temperature setting of the top and bottom plates from 50 to 250 °C.
- Automatic lifting of the lid at the end of the cooking cycle via mechanical spring.
- Lid covers, handle and side panels in high-grade reinforced composite material.
- 800W heating element on the top plate.
- 800W electrical armored heating element on the bottom plate.
- 2 x 1050W magnetrons for microwave.
- Front air inlet and back outlet for efficient cooling ventilation allows easy air filters removal and side by side installation.
- IPX4 water resistance certification.

### User Interface & Data Management

- Connectivity ready for real time access to connected appliances from remote and data monitoring (requires optional accessory - contact the Company for more details).

APPROVAL: \_\_\_\_\_

## Included Accessories

- 1 of Glass saver for SpeedDelight PNC 653527
- 1 of Cleaning brush for SpeedDelight PNC 653623
- 1 of Spatula for SpeedDelight PNC 653625
- 1 of 4 rubber feet - Height = 26 mm for SpeedDelight PNC 653792
- 1 of SpeedDelight spacer stop kit for rear ventilation PNC 653800
- 1 of Pressed non-stick tray PNC 653802
- 1 of Brush with nylon bristles PNC 653803
- 1 of Brush with brass bristles PNC 653804

## Optional Accessories

- Glass saver for SpeedDelight PNC 653527 ☐
- Cleaning brush for SpeedDelight PNC 653623 ☐
- Spatula for SpeedDelight PNC 653625 ☐
- Removable ribbed teflon plate for SpeedDelight PNC 653787 ☐
- 4 stainless steel feet - Height = 76 mm for SpeedDelight PNC 653791 ☐
- 4 rubber feet - Height = 40 mm for SpeedDelight PNC 653793 ☐
- SpeedDelight spacer stop kit for rear ventilation PNC 653800 ☐
- Pressed non-stick tray PNC 653802 ☐
- Brush with nylon bristles PNC 653803 ☐
- Brush with brass bristles PNC 653804 ☐

## Recommended Detergents

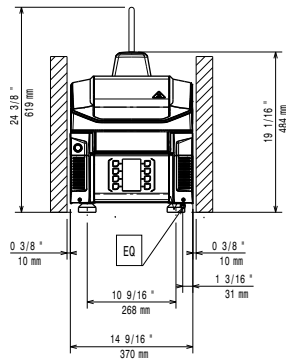
- \*NOT TRANSLATED\* PNC 0S2292 ☐
- S02 DEGREASER 6pzx750ml - ADR&IMDG Limited Quantity PNC 0S2882 ☐



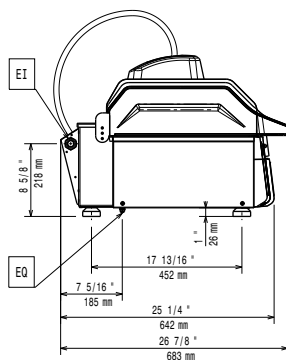
**Electrolux**  
PROFESSIONAL

## Plug In SpeedDelight with flexible top plate, ribbed, removable teflon plate

Front

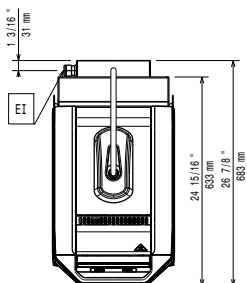


Side

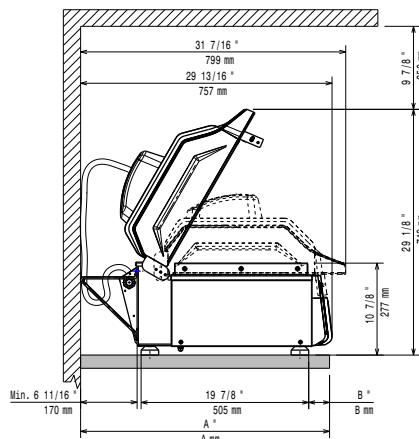


EI = Electrical inlet (power)  
EO = Electrical Outlet

Top



Distances



### Electric

|                 |                       |
|-----------------|-----------------------|
| Supply voltage: | 380-400 V/3N ph/50 Hz |
| Rated amps:     | 9 A                   |
| Total Watts:    | 5 kW                  |
| Plug type:      | IEC 60309 3P+N+T      |

### Installation:

Clearance: 190mm from rear vertical panel

### Key Information:

|                              |                     |
|------------------------------|---------------------|
| Cooking surface (WxD)        | 250 x 250 mm        |
| External dimensions, Width:  | 370 mm              |
| External dimensions, Depth:  | 683 mm              |
| External dimensions, Height: | 619 mm              |
| Net weight:                  | 47 kg               |
| Shipping weight:             | 59 kg               |
| Shipping height:             | 710 mm              |
| Shipping width:              | 450 mm              |
| Shipping depth:              | 760 mm              |
| Shipping volume:             | 0.24 m <sup>3</sup> |



Plug In  
SpeedDelight with flexible top plate, ribbed, removable teflon plate

The company reserves the right to make modifications to the products without prior notice. All information correct at time of printing.

2025.04.28